
Released July 23, 2010, by the National Agricultural Statistics Service (NASS), Agricultural Statistics Board, U.S. Department of Agriculture. For information on *Cattle* call Jason Hardegree at 202-720-3040, office hours 7:30 a.m. to 4:00 p.m. ET.

Special Note

NASS is in the process of modifying report layouts in order to improve readability. This report issue is published using both layouts but all future issues will only be produced with the new layout, which is available on the NASS website: <http://www.nass.usda.gov>. This is the last issue using this layout.

July 1 Cattle Inventory Down 1 Percent

All cattle and calves in the United States as of July 1, 2010, totaled 100.8 million head, 1 percent below the 102.0 million on July 1, 2009.

All cows and heifers that have calved, at 40.8 million, were down 1 percent from July 1, 2009.

- **Beef cows**, at 31.7 million, were down 2 percent from July 1, 2009.
- **Milk cows**, at 9.1 million, were down 1 percent from July 1, 2009.

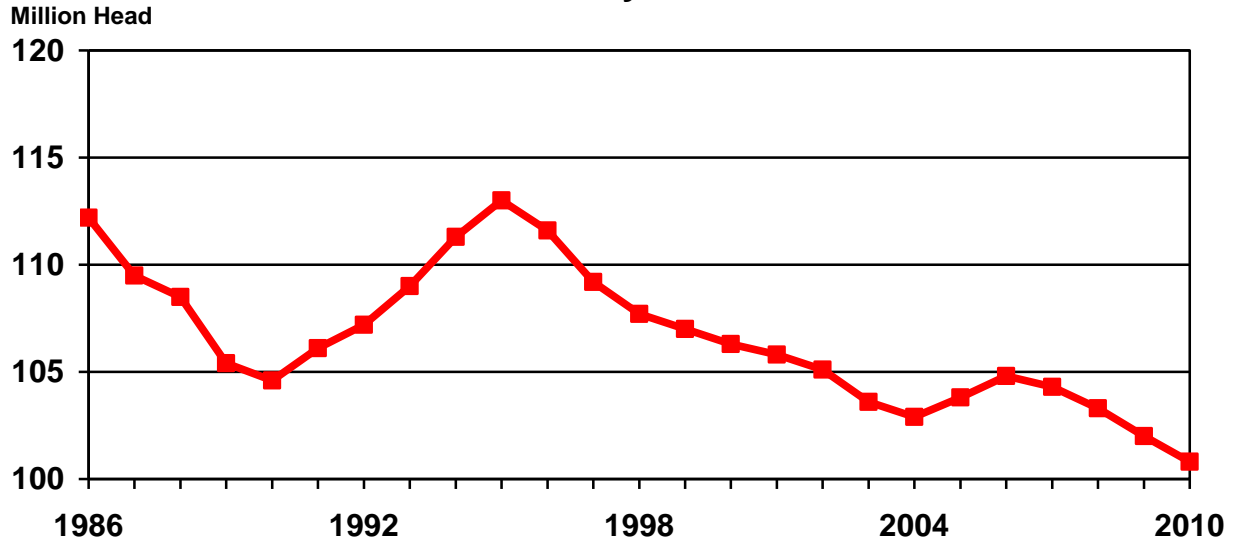
Other class estimates on July 1, 2010 and the changes from July 1, 2009, are as follows:

- **All heifers** 500 pounds and over, 16.1 million, down 1 percent.
- **Beef replacement heifers**, 4.4 million, down 2 percent.
- **Milk replacement heifers**, 4.1 million, up 3 percent.
- **Other heifers**, 7.7 million, down 1 percent.
- **Steers** weighing 500 pounds and over, 14.3 million, down 1 percent.
- **Bulls** weighing 500 pounds and over, 2.1 million, unchanged.
- **Calves under 500 pounds**, 27.5 million, down 1 percent.
- **All cattle and calves on feed** for slaughter, 12.0 million, up 3 percent.

Calf Crop Down 1 Percent

The 2010 calf crop is expected to be 35.4 million, down 1 percent from 2009. Calves born during the first half of the year are estimated at 25.7 million, down 1 percent from 2009.

United States Cattle Inventory July 1



This report was approved on July 23, 2010.

Acting Secretary of
Agriculture
Joseph W. Glauber

Agricultural Statistics Board
Chairperson
Hubert Hamer

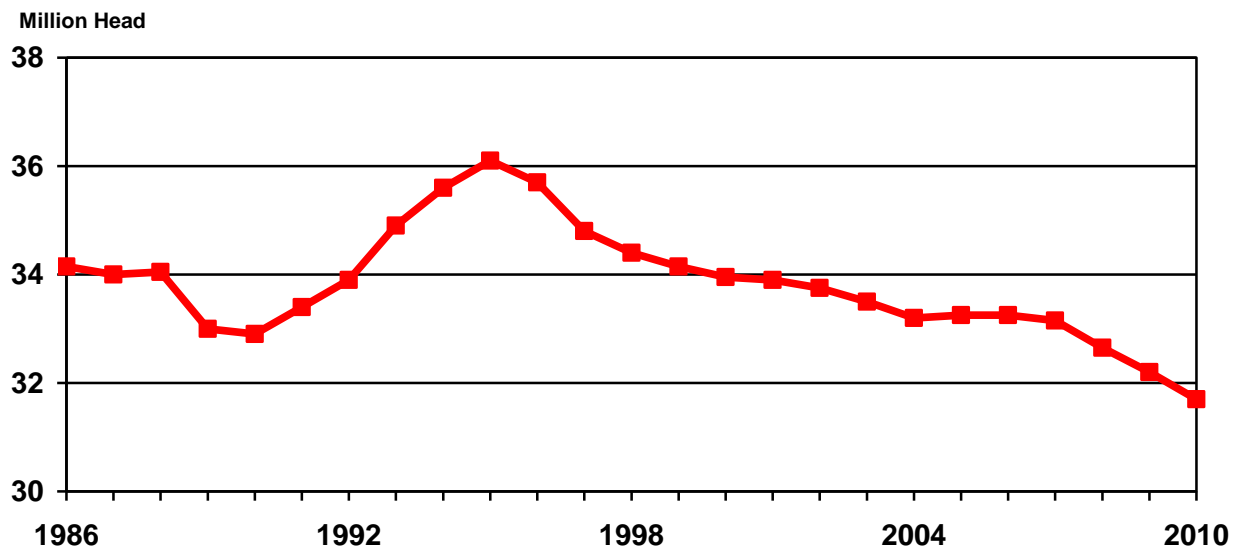
**Cattle and Calves: Number by Class and Calf Crop,
United States, July 1, 2009-2010**

Class	2009	2010	2010 as % of 2009
	<i>1,000 Head</i>	<i>1,000 Head</i>	<i>Percent</i>
Cattle and Calves	102,000	100,800	99
Cows and Heifers That Have Calved	41,400	40,800	99
Beef Cows	32,200	31,700	98
Milk Cows	9,200	9,100	99
Heifers 500 Pounds and Over	16,200	16,100	99
For Beef Cow Replacement	4,500	4,400	98
For Milk Cow Replacement	3,950	4,050	103
Other Heifers	7,750	7,650	99
Steers 500 Pounds and Over	14,400	14,300	99
Bulls 500 Pounds and Over	2,100	2,100	100
Calves Under 500 Pounds	27,900	27,500	99
Calf Crop	35,819	35,400	99
Cattle on Feed	11,600	12,000	103

**Calf Crop: Number and Percent of Total by Six-Month Period,
United States, 2009 and Preliminary Calf Crop, 2010**

Period	2009		2010	
	Number	% of Total	Number	% of Total
	<i>1,000 Head</i>	<i>Percent</i>	<i>1,000 Head</i>	<i>Percent</i>
Jan 1 - Jun 30	26,000.0	72.6	25,700.0	72.6
Jul 1 - Dec 31	9,819.0	27.4	9,700.0	27.4
Total	35,819.0	100.0	35,400.0	100.0

**United States Beef Cow Inventory
July 1**



Reliability of July 1 Cattle and Calves Estimates

Survey Procedures: A random sample of U.S. producers was surveyed to provide data for these estimates. Survey procedures ensured that all cattle producers, regardless of size, had a chance to be included in the survey. Data were collected during the first half of June from about 40,000 small and medium sized operations. These operators were contacted by face-to-face personal interviews. About 10,000 large producers and feedlots were contacted during the first half of July by mail, telephone, and face-to-face personal interviews. Operators were asked to report inventories as of the first of the month and calf crop for the entire year of 2010.

Estimating Procedures: These cattle estimates were prepared by the Agricultural Statistics Board after reviewing National and State indications and analysis. National and State survey data were reviewed for reasonableness with each other and with estimates from the previous year using a balance sheet. The balance sheet begins with the previous inventory estimate, adds to it estimates of births and imports for the first six months, and subtracts estimates of slaughter, exports, and deaths for the first six months of the current year. This indicated ending inventory level is compared to the Agricultural Statistics Board estimate for reasonableness.

Revision Policy: Revisions to previous estimates are made to improve year to year and item to item relationships. Estimates for the previous year are subject to revision when current estimates are made and when the January 1 cattle inventory estimates are made. The revisions are primarily based on livestock slaughter and additional foreign trade and survey data. Estimates will also be reviewed after data from the five-year Census of Agriculture are available. No revisions will be made after that date.

Reliability: Since all cattle operators are not included in the sample, survey estimates are subject to sampling variability. Survey results are also subject to non-sampling errors such as omissions, duplications, and mistakes in reporting, recording, and processing the data. The effects of these errors cannot be measured directly. They are minimized through rigid quality controls in the data collection process and through a careful review of all reported data for consistency and reasonableness.

To assist users in evaluating the reliability of estimates in this report, the "Root Mean Square Error" is shown for selected items in the following table. The "Root Mean Square Error" is a statistical measure based on past performance and is computed using the differences between first and latest estimates. The "Root Mean Square Error" for July cattle inventory estimates over the past 10 years is 0.5 percent. This means that chances are 2 out of 3 that the final estimate will not be above or below the current estimate of 100.8 million head by more than 0.5 percent. Chances are 9 out of 10 that the difference will not exceed 1.0 percent.

The table below also shows a 10 year record of the range of differences between first and latest estimates for selected items. Using estimates of all cattle and calves as an example, changes between the first inventory estimate and the latest estimate during the past 10 years have averaged 450,000 head, ranging from 0 to 1,000,000 head. During this period the initial inventory estimate has been below the latest estimate 1 time and has been above the latest estimate 8 times. This does not imply that the July 1 estimate is likely to understate or overstate final inventory.

Reliability of July 1 Cattle Estimates ¹

Item	Root Mean Square Error	90 Percent Confidence Level		Difference Between First and Latest Estimates			Number of Years	
		Percent	Head	Average	Smallest	Largest	First Above Latest	First Below Latest
	<i>Percent</i>	<i>Percent</i>	<i>1,000 Head</i>	<i>1,000 Head</i>	<i>1,000 Head</i>	<i>1,000 Head</i>	<i>Number</i>	<i>Number</i>
All Cattle	0.5	1.0	1,008	450	0	1,000	8	1
All Cows	0.7	1.3	530	210	0	600	6	0
Calf Crop	1.6	2.9	1,027	467	10	1,098	8	2

¹ Based on data from the past 10 years.

Information Contacts

Listed below are the commodity specialists in the Livestock Branch of the National Agricultural Statistics Service to contact for additional information.

- Dan Kerestes, Chief, Livestock Branch (202) 720-3570
- Scott Hollis, Head, Livestock Section (202) 690-2424
 - Jim Collom – Dairy Products (202) 690-3236
 - Joe Gaynor – Dairy Products Prices (202) 690-2168
 - Jason Hardegree – Cattle, Cattle on Feed (202) 720-3040
 - Sherry Bertramsen – Livestock Slaughter (515) 284-4340
 - Everett Olbert – Sheep and Goats (202) 720-4751
 - Mike Miller – Milk Production and Milk Cows (202) 720-3278
 - Nick Streff – Hogs and Pigs (202) 720-3106

ACCESS TO REPORTS!!

For your convenience, there are several ways to obtain NASS reports, data products, and services:

INTERNET ACCESS

All NASS reports are available free of charge. For free access, connect to the Internet and go to the NASS Home Page at: www.nass.usda.gov.

E-MAIL SUBSCRIPTION

All NASS reports are available by subscription free of charge direct to your e-mail address. Starting with the NASS Home Page at www.nass.usda.gov, under the right navigation, *Receive reports by Email*, click on **National** or **State**. Follow the instructions on the screen.

PRINTED REPORTS OR DATA PRODUCTS

CALL OUR TOLL-FREE ORDER DESK: 800-999-6779 (U.S. and Canada)
Other areas, please call 703-605-6220 FAX: 703-605-6880
(Visa, MasterCard, check, or money order acceptable for payment.)

ASSISTANCE

For **assistance** with general agricultural statistics or further information about NASS or its products or services, contact the **Agricultural Statistics Hotline** at **800-727-9540**, 7:30 a.m. to 4:00 p.m. ET, or e-mail: nass@nass.usda.gov.

The U.S. Department of Agriculture (USDA) prohibits discrimination in all its programs and activities on the basis of race, color, national origin, age, disability, and where applicable, sex, marital status, familial status, parental status, religion, sexual orientation, genetic information, political beliefs, reprisal, or because all or a part of an individual's income is derived from any public assistance program. (Not all prohibited bases apply to all programs.) Persons with disabilities who require alternative means for communication of program information (Braille, large print, audiotape, etc.) should contact USDA's TARGET Center at (202) 720-2600 (voice and TDD).

To file a complaint of discrimination, write to USDA, Director, Office of Civil Rights, 1400 Independence Avenue, S.W., Washington, D.C. 20250-9410, or call (800) 795-3272 (voice) or (202) 720-6382 (TDD). USDA is an equal opportunity provider and employer.