

# Milk Production

Released November 18, 2009, by the National Agricultural Statistics Service (NASS), Agricultural Statistics Board, U.S. Department of Agriculture. For information on *Milk Production* call Mike Miller at 202-720-3278, office hours 7:30 a.m. to 4:00 p.m. ET.

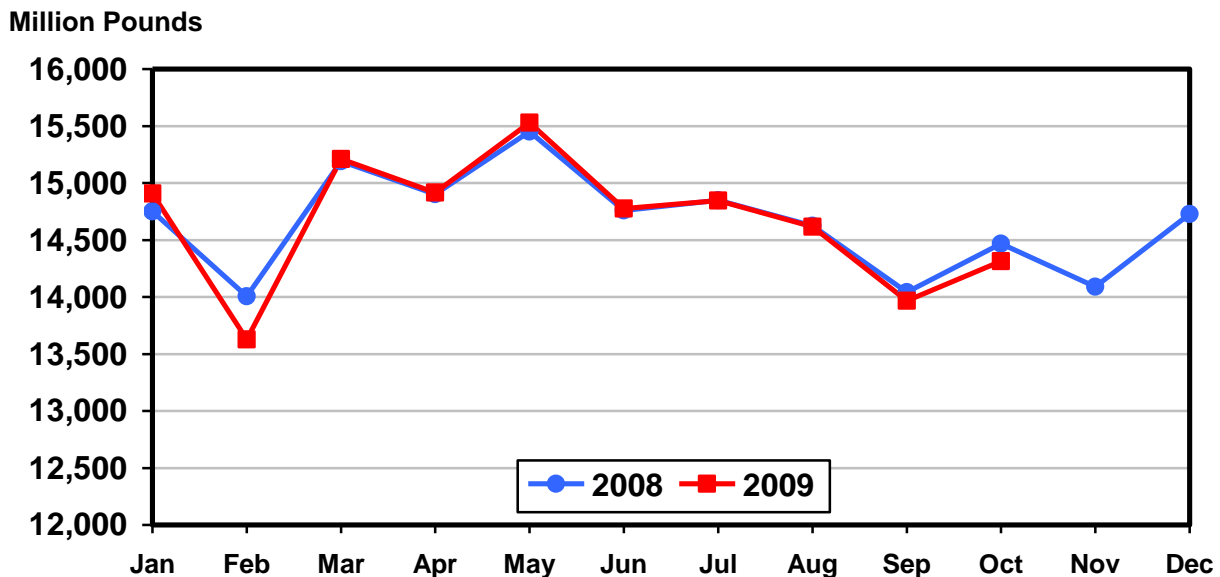
## October Milk Production down 1.1 Percent

**Milk production** in the 23 major States during October totaled 14.3 billion pounds, down 1.1 percent from October 2008. September revised production at 14.0 billion pounds, was down 0.5 percent from September 2008. The September revision represented an increase of 16 million pounds or 0.1 percent from last month's preliminary production estimate.

**Production per cow** in the 23 major States averaged 1,721 pounds for October, 21 pounds above October 2008.

**The number of milk cows** on farms in the 23 major States was 8.32 million head, 196,000 head less than October 2008, and 22,000 head less than September 2009.

## Monthly Milk Production 23 States



**Milk Cows and Production: By Quarter, United States, 2008-2009**<sup>1</sup>

Quarter	Milk Cows <sup>2</sup>		Milk Per Cow <sup>3</sup>		Milk Production <sup>3</sup>		
	2008	2009	2008	2009	2008	2009	Change From 2008
	<i>1,000 Head</i>	<i>1,000 Head</i>	<i>Pounds</i>	<i>Pounds</i>	<i>Million Pounds</i>	<i>Million Pounds</i>	<i>Percent</i>
Jan-Mar	9,286	9,295	5,127	5,096	47,610	47,363	-0.5
Apr-Jun	9,315	9,260	5,236	5,278	48,774	48,874	0.2
Jul-Sep	9,330	9,158	5,025	5,107	46,881	46,774	-0.2
Oct-Dec	9,330		5,008		46,727		
Annual	9,315		20,396		189,992		

<sup>1</sup> May not add due to rounding.

<sup>2</sup> Includes dry cows, excludes heifers not yet fresh.

<sup>3</sup> Excludes milk sucked by calves.

**Milk Cows and Production: By Month, 23 Selected States, 2008-2009**<sup>1</sup>

Month	Milk Cows <sup>2</sup>		Milk Per Cow <sup>3</sup>		Milk Production <sup>3</sup>		
	2008	2009	2008	2009	2008	2009	Change from 2008
	<i>1,000 Head</i>	<i>1,000 Head</i>	<i>Pounds</i>	<i>Pounds</i>	<i>Million Pounds</i>	<i>Million Pounds</i>	<i>Percent</i>
Jan	8,445	8,504	1,747	1,753	14,750	14,907	1.1
Feb	8,457	8,486	1,656	1,606	14,007	13,627	-2.7
Mar	8,467	8,481	1,794	1,794	15,191	15,211	0.1
Apr	8,482	8,481	1,757	1,759	14,901	14,916	0.1
May	8,496	8,473	1,819	1,833	15,451	15,529	0.5
Jun	8,500	8,434	1,736	1,752	14,760	14,775	0.1
Jul	8,515	8,400	1,744	1,767	14,848	14,845	
Aug	8,515	8,374	1,718	1,746	14,626	14,617	-0.1
Sep	8,510	8,338	1,650	1,675	14,041	13,965	-0.5
Oct	8,512	8,316	1,700	1,721	14,469	14,313	-1.1
Nov	8,519		1,654		14,089		
Dec	8,519		1,729		14,728		
Annual	8,495		20,704		175,861		

<sup>1</sup> 2009 previous month revised.

<sup>2</sup> Includes dry cows, excludes heifers not yet fresh.

<sup>3</sup> Excludes milk sucked by calves.

**Estimated Milk Cows and Production: By Month, United States, 2008-2009**<sup>1</sup>

Month	Milk Cows <sup>2</sup>		Milk Per Cow <sup>3</sup>		Milk Production <sup>3</sup>		
	2008	2009	2008	2009	2008	2009	Change From 2008
	<i>1,000 Head</i>	<i>1,000 Head</i>	<i>Pounds</i>	<i>Pounds</i>	<i>Million Pounds</i>	<i>Million Pounds</i>	<i>Percent</i>
Jan	9,276	9,312	1,722	1,733	15,976	16,138	1.0
Feb	9,287	9,289	1,634	1,589	15,176	14,756	-2.8
Mar	9,295	9,283	1,771	1,774	16,458	16,469	0.1
Apr	9,307	9,282	1,733	1,738	16,125	16,135	0.1
May	9,318	9,270	1,793	1,811	16,707	16,785	0.5
Jun	9,321	9,228	1,710	1,729	15,942	15,954	0.1
Jul	9,335	9,190	1,713	1,740	15,995	15,989	
Aug	9,331	9,162	1,689	1,718	15,757	15,743	-0.1
Sep	9,323	9,122	1,623	1,649	15,129	15,042	-0.6
Oct	9,324	9,098	1,675	1,697	15,615	15,440	-1.1
Nov	9,333		1,630		15,212		
Dec	9,334		1,703		15,900		
Annual	9,315		20,396		189,992		

<sup>1</sup> 2009 revised.

<sup>2</sup> Includes dry cows, excludes heifers not yet fresh.

<sup>3</sup> Excludes milk sucked by calves.

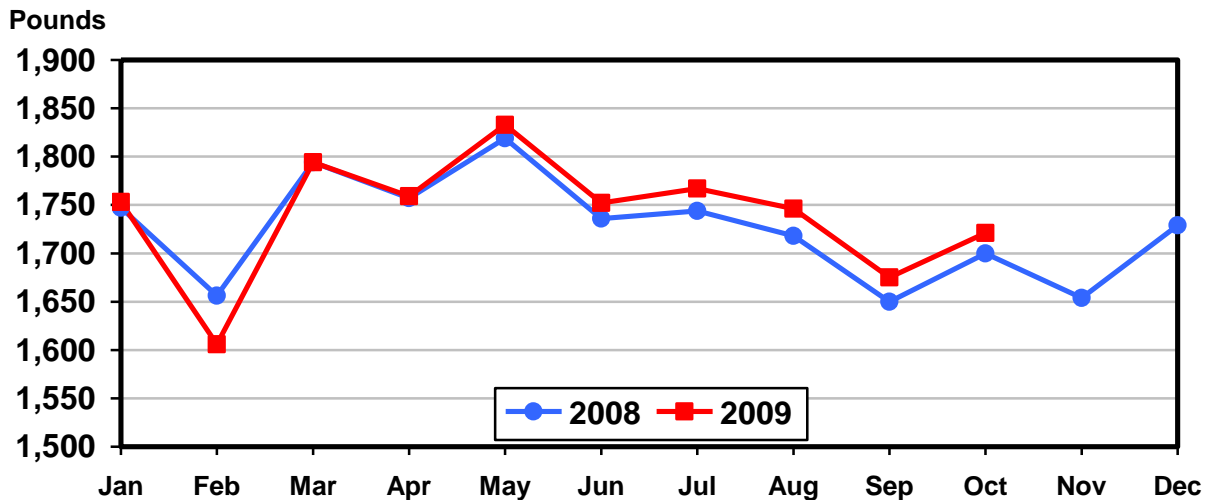
**Milk Cows and Production: By State, October 2008-2009**

State	Milk Cows <sup>1</sup>		Milk Per Cow <sup>2</sup>		Milk Production <sup>2</sup>		
	2008	2009	2008	2009	2008	2009	Change From 2008
	<i>1,000 Head</i>	<i>1,000 Head</i>	<i>Pounds</i>	<i>Pounds</i>	<i>Million Pounds</i>	<i>Million Pounds</i>	<i>Percent</i>
AZ	186	166	1,835	1,840	341	305	-10.6
CA	1,845	1,767	1,835	1,815	3,386	3,207	-5.3
CO	130	116	1,890	1,930	246	224	-8.9
FL	119	113	1,225	1,260	146	142	-2.7
ID	554	546	1,870	1,870	1,036	1,021	-1.4
IL	102	101	1,490	1,550	152	157	3.3
IN	166	168	1,625	1,680	270	282	4.4
IA	215	215	1,690	1,690	363	363	
KS	118	112	1,720	1,750	203	196	-3.4
MI	353	355	1,845	1,860	651	660	1.4
MN	466	469	1,555	1,585	725	743	2.5
MO	110	105	1,180	1,170	130	123	-5.4
NM	334	317	1,920	2,020	641	640	-0.2
NY	625	614	1,620	1,625	1,013	998	-1.5
OH	278	276	1,510	1,570	420	433	3.1
OR	115	114	1,615	1,625	186	185	-0.5
PA	549	539	1,570	1,600	862	862	
TX	428	413	1,625	1,720	696	710	2.0
UT	85	83	1,765	1,780	150	148	-1.3
VT	139	134	1,490	1,495	207	200	-3.4
VA	97	95	1,435	1,485	139	141	1.4
WA	245	240	1,920	1,940	470	466	-0.9
WI	1,253	1,258	1,625	1,675	2,036	2,107	3.5
23-State Total	8,512	8,316	1,700	1,721	14,469	14,313	-1.1

<sup>1</sup> Includes dry cows, excludes heifers not yet fresh.

<sup>2</sup> Excludes milk sucked by calves.

### Monthly Milk per Cow 23 States



**Milk Cows and Production: By State, September 2008-2009 <sup>1</sup>**

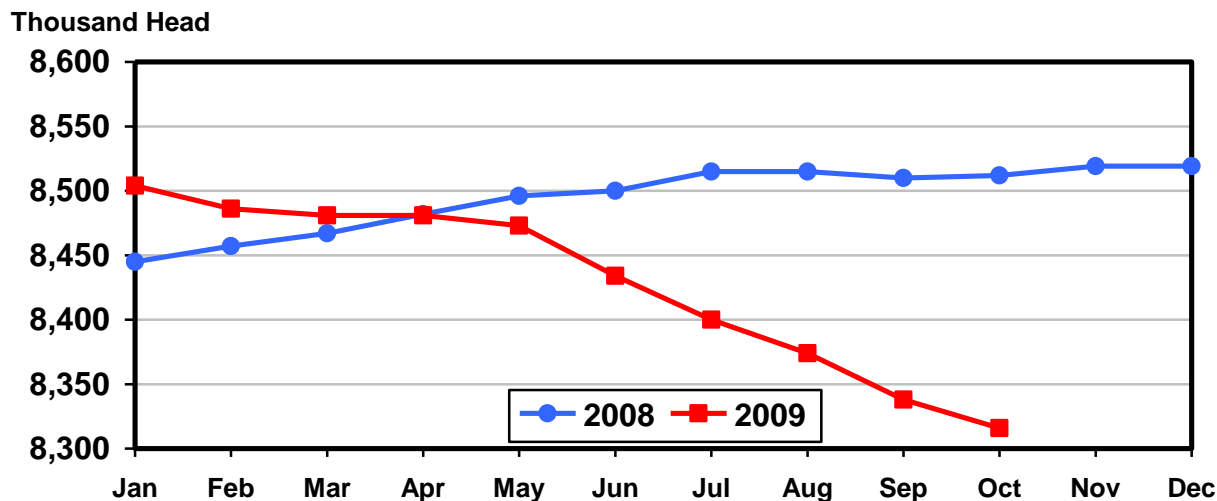
State	Milk Cows <sup>2</sup>		Milk per Cow <sup>3</sup>		Milk Production <sup>3</sup>		
	2008	2009	2008	2009	2008	2009	Change From 2008
	<i>1,000 Head</i>	<i>1,000 Head</i>	<i>Pounds</i>	<i>Pounds</i>	<i>Million Pounds</i>	<i>Million Pounds</i>	<i>Percent</i>
AZ	185	167	1,710	1,690	316	282	-10.8
CA	1,845	1,769	1,775	1,735	3,275	3,069	-6.3
CO	130	119	1,850	1,880	241	224	-7.1
FL	120	114	1,160	1,180	139	135	-2.9
ID	554	546	1,870	1,850	1,036	1,010	-2.5
IL	102	102	1,425	1,480	145	151	4.1
IN	166	168	1,550	1,620	257	272	5.8
IA	215	215	1,630	1,630	350	350	
KS	117	114	1,665	1,675	195	191	-2.1
MI	352	356	1,790	1,835	630	653	3.7
MN	465	469	1,490	1,545	693	725	4.6
MO	111	105	1,100	1,110	122	117	-4.1
NM	336	318	1,880	1,980	632	630	-0.3
NY	626	617	1,590	1,615	995	996	0.1
OH	279	278	1,450	1,520	405	423	4.4
OR	115	114	1,590	1,595	183	182	-0.5
PA	548	542	1,530	1,560	838	846	1.0
TX	425	416	1,550	1,660	659	691	4.9
UT	85	83	1,740	1,760	148	146	-1.4
VT	139	134	1,470	1,485	204	199	-2.5
VA	97	96	1,360	1,405	132	135	2.3
WA	245	238	1,900	1,915	466	456	-2.1
WI	1,253	1,258	1,580	1,655	1,980	2,082	5.2
23-State Total	8,510	8,338	1,650	1,675	14,041	13,965	-0.5

<sup>1</sup> 2009 revised.

<sup>2</sup> Includes dry cows, excludes heifers not yet fresh.

<sup>3</sup> Excludes milk sucked by calves.

## Monthly Milk Cows 23 States



## Reliability Statement

**Survey Procedures:** Primary data used to determine these estimates were obtained from a sample of producers. Individual States maintain a list of all known milk producers and information on the size of their herd. States use all known sources of producers to ensure that their lists are as complete as possible. Generally, all large producers and a sample of small producers are included in the survey. Questionnaires are mailed to producers near the end of the month to obtain data for the first day of the month. Additional reports are obtained by telephone, as needed, to supplement the mail response. Where feasible, States utilize state and federal administrative data, rather than conduct a monthly or quarterly survey, to estimate milk production. This eliminates duplication of data gathering by different government agencies. Indications of milk cow inventory are also obtained in the January and July Cattle Surveys.

**Estimation Procedures:** State offices prepare these estimates by using a combination of survey indications, historic trends, and any available administrative data. Individual State estimates are reviewed by the Agricultural Statistics Board for reasonableness.

**Revision Policy:** Milk production, rate per cow, and number of cows are subject to revision the following month for monthly States or the following quarter for the quarterly States. Normally, Federal Market Order sales are the main basis for revisions. However, data for all orders are not available in time for this revision. Estimates are again subject to revisions in February each year based on additional administrative data. In the event that additional changes are necessary, a third revision is possible in February the following year. Estimates are again reviewed after data from the five-year Census of Agriculture are available. No revisions are made after that date.

**Reliability:** Since all operations with dairy animals are not included in the sample, survey estimates are subject to sampling variability. Survey results are also subject to non-sampling errors such as omissions, duplications, and mistakes in reporting, recording, and processing the data. The effects of these errors cannot be measured directly. They are minimized through rigid quality controls in the data collection process and through a careful review of all reported data for consistency and reasonableness.

To assist users in evaluating the reliability of the estimates in this report, the "Root Mean Square Error" is shown for selected items on the next page. The "Root Mean Square Error" is a statistical measure based on past performance and is computed using the differences between first and final estimates. The "Root Mean Square Error" for the 23 State milk cow inventory estimates over the past 24 months is 0.4 percent. This means that chances are 2 out of 3 that the final estimate will not be above or below the current estimate of 8.32 million head by more than 0.4 percent. Chances are 9 out of 10 that the difference will not exceed 0.8 percent.

**Reliability of Monthly Milk Production Estimates <sup>1</sup>**

Item	Root Mean Square Error	90% Confidence Level		Difference Between First and Latest Estimates			Months	
				Average	Smallest	Largest	First Above Latest	First Below Latest
				Million Pounds	Million Pounds	Million Pounds	Number	Number
Milk Production	<i>Percent</i> 0.2	<i>Percent</i> 0.4	<i>Million Pounds</i> 59	28	4	102	2	22
All Milk Cows	<i>Percent</i> 0.4	<i>Percent</i> 0.8	<i>1,000 Head</i> 63	<i>1,000 Head</i> 30	<i>1,000 Head</i> 0	<i>1,000 Head</i> 55	<i>Number</i> 5	<i>Number</i> 18

<sup>1</sup> Based on the 23 State total for the past 24 months.

**Information Contacts**

Listed below are the commodity specialists in the Livestock Branch of the National Agricultural Statistics Service to contact for additional information.

Dan Kerestes, Chief, Livestock Branch ..... (202) 720-3570

Livestock Section

Scott Hollis, Head, Livestock Section ..... (202) 690-2424  
 Jim Collom - Dairy Products ..... (202) 690-3236  
 Joe Gaynor - Dairy Products Prices ..... (202) 690-2168  
 Jason Hardegree - Cattle, Cattle on Feed ..... (202) 720-3040  
 Sherry Bertramsen - Livestock Slaughter ..... (515) 284-4340  
 Everett Olbert - Sheep and Goats ..... (202) 720-4751  
 Mike Miller - Milk Production and Milk Cows ..... (202) 720-3278  
 Nick Streff - Hogs and Pigs ..... (202) 720-3106

## ACCESS TO REPORTS!!

---

For your convenience, there are several ways to obtain NASS reports, data products, and services:

### INTERNET ACCESS

All NASS reports are available free of charge. For free access, connect to the Internet and go to the NASS Home Page at: [www.nass.usda.gov](http://www.nass.usda.gov).

### E-MAIL SUBSCRIPTION

All NASS reports are available by subscription free of charge direct to your e-mail address. Starting with the NASS Home Page at [www.nass.usda.gov](http://www.nass.usda.gov), under the right navigation, *Receive reports by Email*, click on **National** or **State**. Follow the instructions on the screen.

-----

### PRINTED REPORTS OR DATA PRODUCTS

**CALL OUR TOLL-FREE ORDER DESK: 800-999-6779 (U.S. and Canada)**  
**Other areas, please call 703-605-6220      FAX: 703-605-6880**  
**(Visa, MasterCard, check, or money order acceptable for payment.)**

-----

### ASSISTANCE

For **assistance** with general agricultural statistics or further information about NASS or its products or services, contact the **Agricultural Statistics Hotline** at **800-727-9540**, 7:30 a.m. to 4:00 p.m. ET, or e-mail: [nass@nass.usda.gov](mailto:nass@nass.usda.gov).

The U.S. Department of Agriculture (USDA) prohibits discrimination in all its programs and activities on the basis of race, color, national origin, age, disability, and where applicable, sex, marital status, familial status, parental status, religion, sexual orientation, genetic information, political beliefs, reprisal, or because all or a part of an individual's income is derived from any public assistance program. (Not all prohibited bases apply to all programs.) Persons with disabilities who require alternative means for communication of program information (Braille, large print, audiotape, etc.) should contact USDA's TARGET Center at (202) 720-2600 (voice and TDD).

To file a complaint of discrimination, write to USDA, Director, Office of Civil Rights, 1400 Independence Avenue, S.W., Washington, D.C. 20250-9410, or call (800) 795-3272 (voice) or (202) 720-6382 (TDD). USDA is an equal opportunity provider and employer.