



EPA

United States
Environmental Protection
Agency

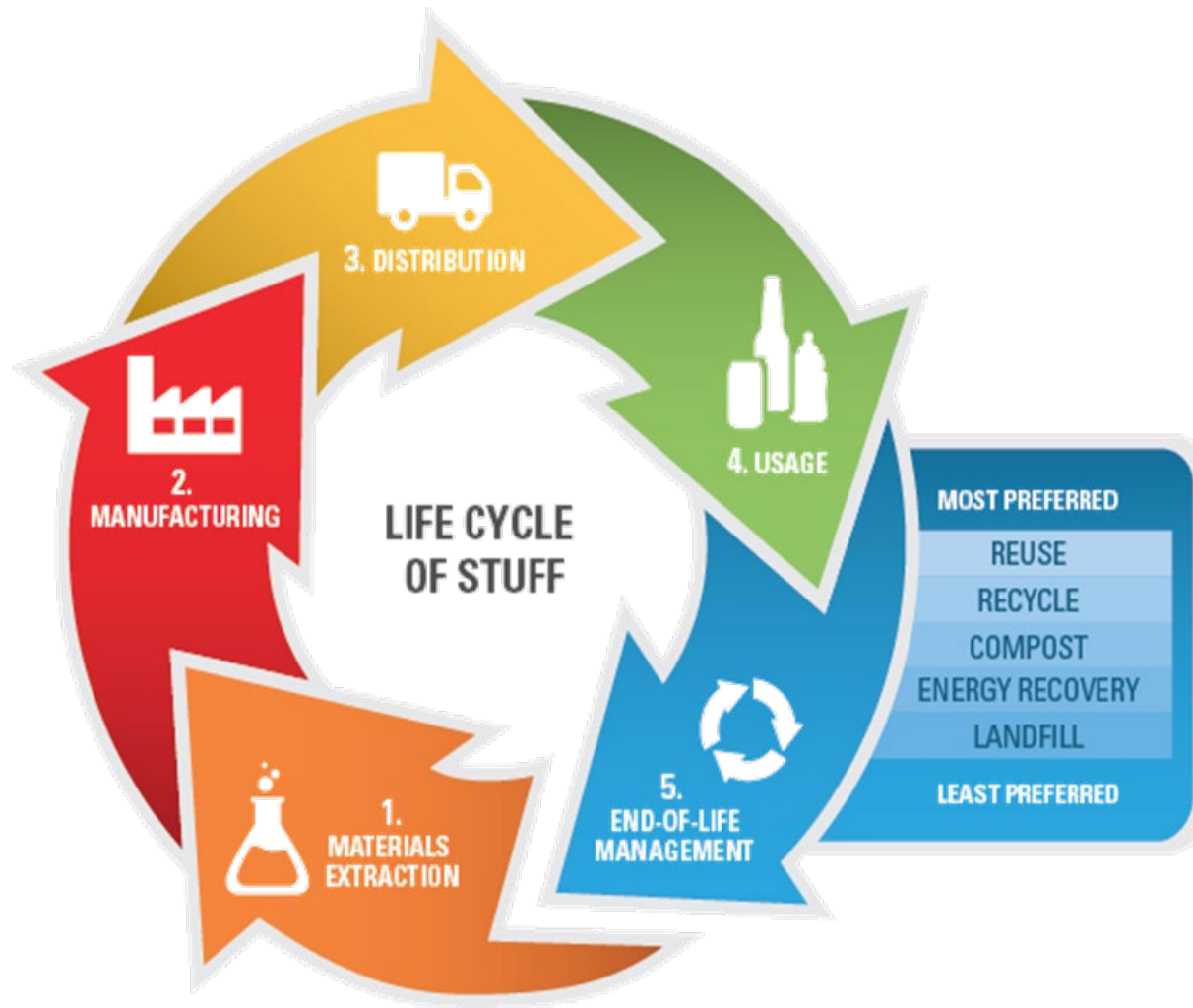
Sustainable Management of Food

December 17, 2020

Faith Fellowship and Food Security

Federal Partner Resources to Support
Food Security

What is Sustainable Materials Management?

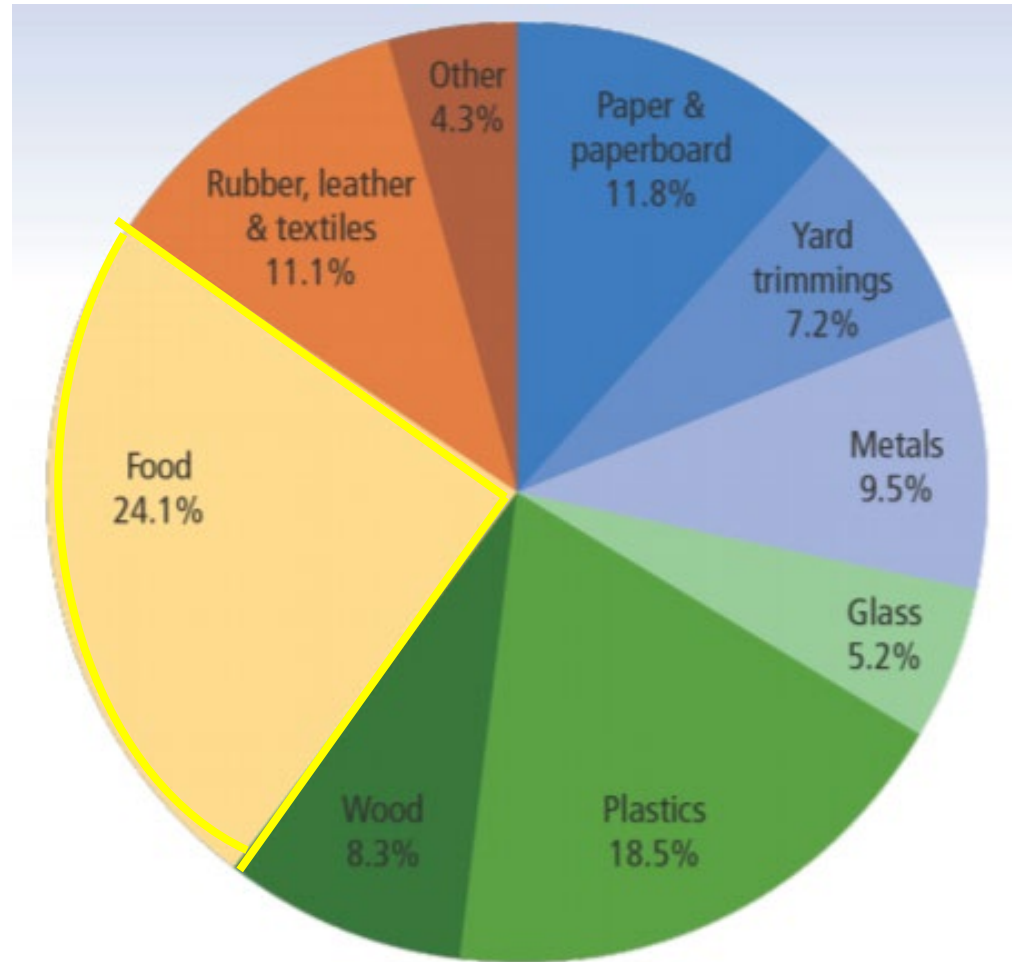


“An approach to serving human needs by using/reusing resources productively and sustainably throughout their life cycles, generally minimizing the amount of materials involved and all associated environmental impacts.”

***Sustainable Materials Management:
The Road Ahead, EPA (2009)***

EPA's Facts and Figures Food Waste Estimates

Total MSW Landfilled (by material), 2018
146.2 Million Tons



EPA estimates **35.3 million tons** of wasted food went to landfills in 2018, representing **24.1 percent** of all MSW landfilled.





By 2030:

Let's cut the amount of food we waste in half.



30-40% OF ALL AVAILABLE **FOOD** IN THE U.S. IS **WASTED**

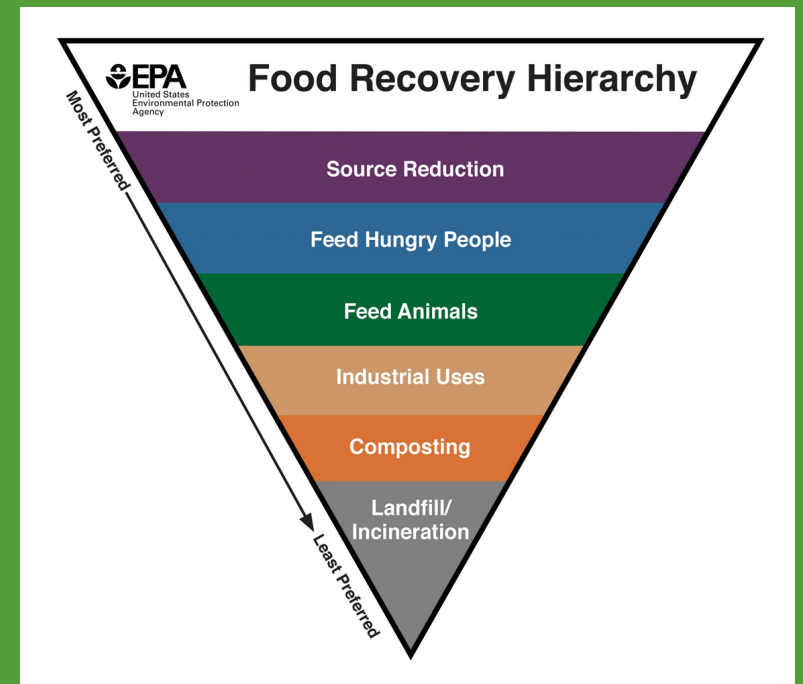
Do your part. Join your federal partners
in reducing food waste.

#NoWastedFood





WHY IS FOOD WASTED? AND WHAT CAN WE DO ABOUT IT?



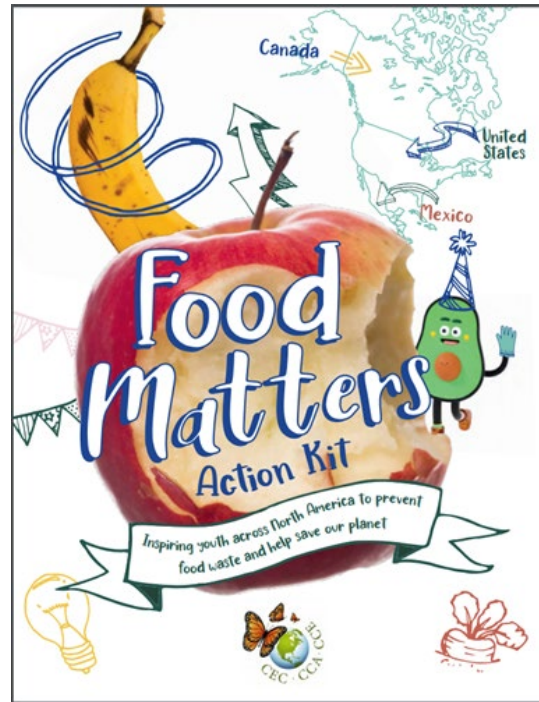
TOOLS AND RESOURCES

<https://www.epa.gov/sustainable-management-food>



Center for Food Loss and Waste Solutions

SAVETHEFOOD.COM



Why and How to Measure Food Loss and Waste

A PRACTICAL GUIDE

Food Stewards Toolkit

<https://www.epa.gov/sustainable-management-food/food-stewards>



Benefits of Reducing Wasted Food



Provides nutritious food to those who might not have reliable access to food.



Saves money through smart planning and reducing over-purchasing.



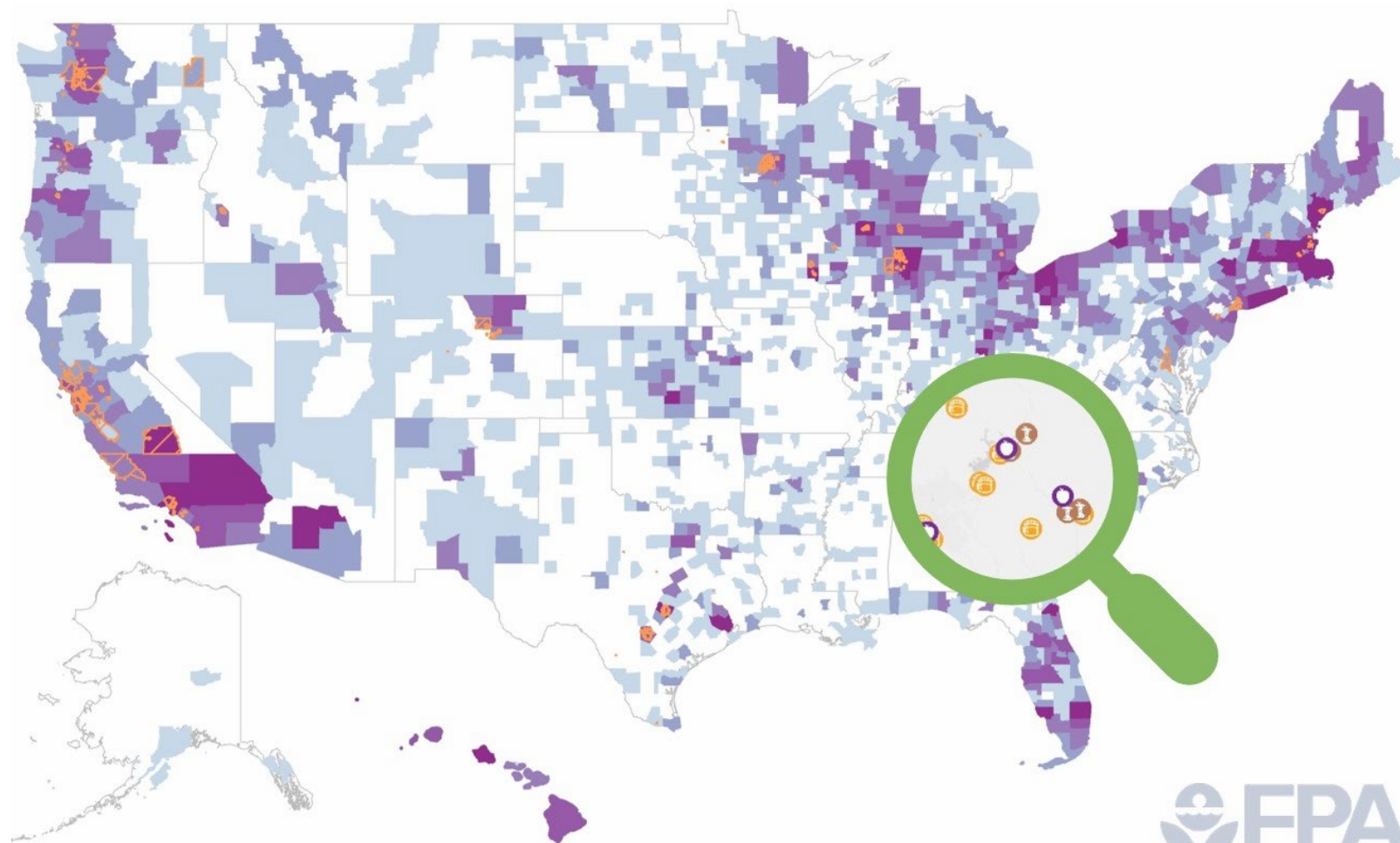
Reduces methane emissions from landfills and conserves water and energy resources.



Reduces pollution involved in manufacturing and transporting food.



Excess Food Opportunities Map



Find more than one million potential generators (sources) of excess, and about 5,000 recipients (food banks, composters and anaerobic digesters) around the country and in your community.

www.epa.gov/foodmap





Food Recovery Challenge

1,000+ **FRC** Participants & Endorsers

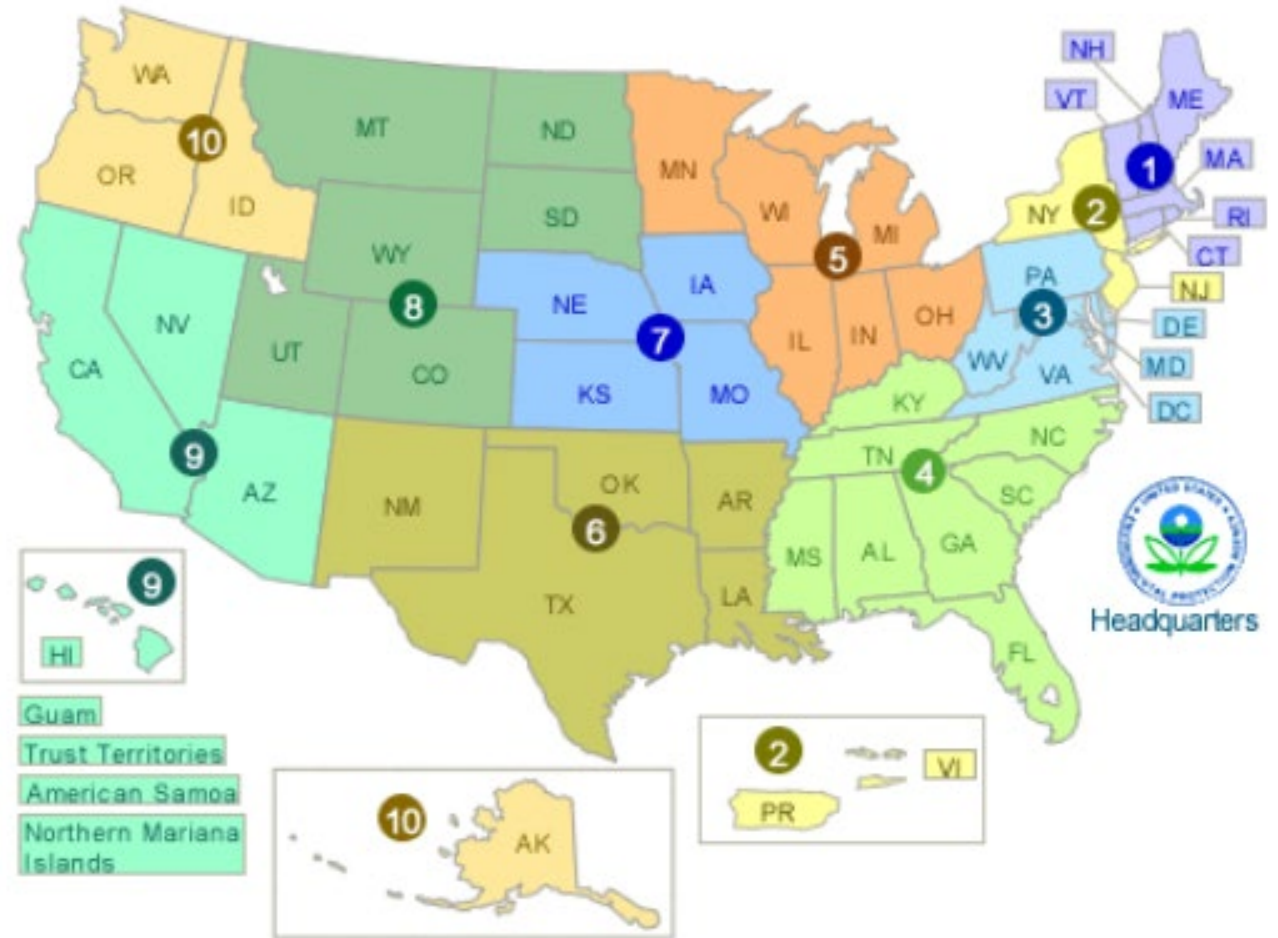
Grocers, educational institutions, restaurants, faith organizations, sports and entertainment venues, and hospitality businesses

If food is part of your operations, join the Food Recovery Challenge!

<https://www.epa.gov/sustainable-management-food/food-recovery-challenge-frc>



Contact Us About Sustainable Management of Food



<https://www.epa.gov/sustainable-management-food/forms/contact-us-about-sustainable-management-food>

Thank you!

The image features a vertical sequence of four seedlings growing from a mound of dark soil. From left to right, the seedlings show increasing growth: the first is a small sprout with a single leaf; the second has two leaves; the third has a larger stem and two leaves; the fourth is the tallest, with a long stem and several leaves. The background is a soft, out-of-focus green with bokeh light spots.

Lana Suarez, Sustainable Management of Food
U.S. Environmental Protection Agency
suarez.lana@epa.gov