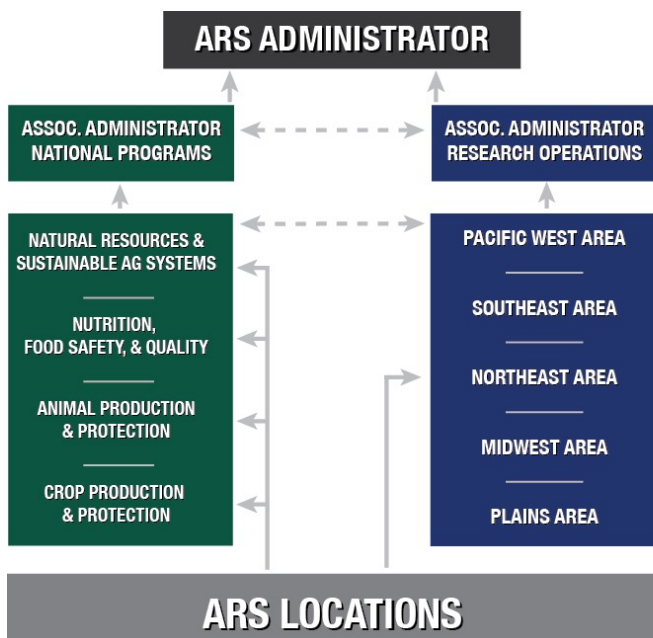


# Organizational Restructuring

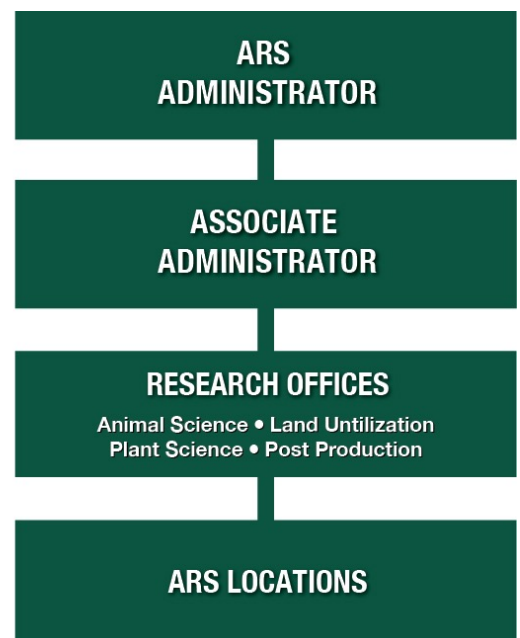
- USDA’s Research, Education, and Economics (REE) Mission Area announced a comprehensive reorganization.
- ARS National Programs and Area Offices will be combined to move from a matrix aligned organization to a mission aligned organization making operations more efficient and increasing authority and accountability of mission delivery and success.
- ARS is establishing 4 new Research offices to:
  - Strengthen alignment to our National Programs
  - Reduce organizational complexity that results from separate program and line management structures
  - Strengthen leadership accountability and decision making
  - Improve nationwide agility, consistency, and coordination of our research
- New mission aligned ARS Research Offices are:
  - Animal Science Research Office – Fort Collins, CO
  - Plant Science Research Office – Stoneville, MS
  - Land Utilization Research Office – Peoria, IL
  - Post-Production Research Office, Albany, CA
- This is the next step in ARS’s evolution to meet the needs of the farmers and ranchers we serve.
- These changes allow us to position the agency for long-term success.
- Several principles remain constant:
  - Our mission and commitment to research excellence and scientific integrity
  - Our strength as a field-based agency working where our customers are
  - Our dedication to enabling ARS employees to do their best work every day
  - Our engagement with farmers, ranchers, stakeholders, collaborators, and partners

Through these changes, our projects will benefit. Our people will benefit. And, **most importantly, our customers—America’s farmers, ranchers and producers —will benefit.**

**Previous (Matrix Aligned)**



**New (Mission Aligned)**



# Beltsville Agricultural Research Center (BARC) Project Distribution

- USDA’s Research, Education, and Economics (REE) Mission Area announced a comprehensive reorganization. As part of this reorganization, research projects at the Beltsville Agricultural Research Center (BARC), including the Beltsville Human Nutrition Research Center, will move to other ARS locations outside the NCR to ensure access to enhanced research infrastructure and to better align with complementary research projects.
- At BARC, ARS operates and maintains a small town with over 400 buildings, over 35 miles of public roads, 2 wastewater treatment plants, a water treatment plant, 2 steam power plants, and an electrical substation.
- To modernize just 11 of the over 400 buildings and to address the over \$300 million in deferred maintenance, USDA would need a one-time infusion of \$500 million, and ongoing annual investments of over \$40 million.
- It is financially unsound to keep BARC open and impossible to ask USDA researchers to provide the American people with cutting-edge scientific solutions from this facility.
- For our research projects to continue successfully into the future, we must be able to invest in our research and not have facilities and infrastructure repair, maintenance, and modernization costs overtake investments in research.
- Relocating BARC research projects to other ARS research facilities will allow many researchers to be closer to their customers and bring critical agricultural research directly to the geographic areas, and producers, they serve.

**Relocating research from BARC is a huge win for American farmers and consumers.**

## BARC Research Project Distribution

- Fayetteville, AR
- Albany, CA
- Fort Collins, CO
- Fort Pierce, FL
- Miami, FL
- Athens, GA
- Tifton, GA
- Ames, IA
- Aberdeen, ID
- West Lafayette, IN
- St. Paul, MN
- Columbia, MO
- Starkville, MS
- Stoneville, MS
- Raleigh, NC
- Fargo, ND
- Grand Forks, ND
- Clay Center, NE
- \*\*Chatsworth, NJ
- University Park, PA
- Wyndmoor, PA
- Charleston, SC
- Kerrville, TX
- Logan, UT
- Wenatchee, WA
- Madison, WI
- Kearneysville, WV (\*\*ARS worksite)

## ARS Mission Aligned Research Offices and Locations

