



NATIONAL INSTITUTE OF FOOD AND AGRICULTURE REORGANIZATION FACT SHEET

As part of the USDA's reorganization effort, the National Institute of Food and Agriculture is realigning its organizational structure to strengthen mission delivery, improve operational efficiency, and position the agency for long-term sustainability to best serve NIFA's stakeholders.

The changes include centralizing core operations in Kansas City, MO, retaining high-level leadership presence in Washington, DC, consolidating grants and awards management into an ARS-managed REE Mission Area Business Center, and aligning organizational functions.

Additional implementation details and transition materials will be provided as they become available.

KEY STRUCTURAL CHANGES

NIFA is establishing three new program offices to:

- Strengthen alignment to our research, education, and Extension mission
- Improve organizational efficiency in programmatic functions
- Enhance leadership accountability and decision making

New mission aligned NIFA Program Offices located in Kansas City, MO:

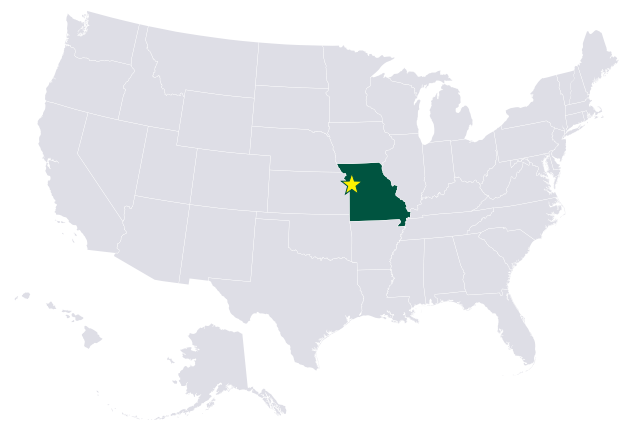
- Office of Research Programs
- Office of Education and Extension Programs
- Office of Coordinated Programs

A REE Business Center is being created in ARS that will:

- Support grants management at the Mission level
- Primarily focus on executing NIFA grants

A new role of Principal Associate Director to:

- Expand senior leadership capacity in Kansas City
- Extend executive direction across agency operations and program activities



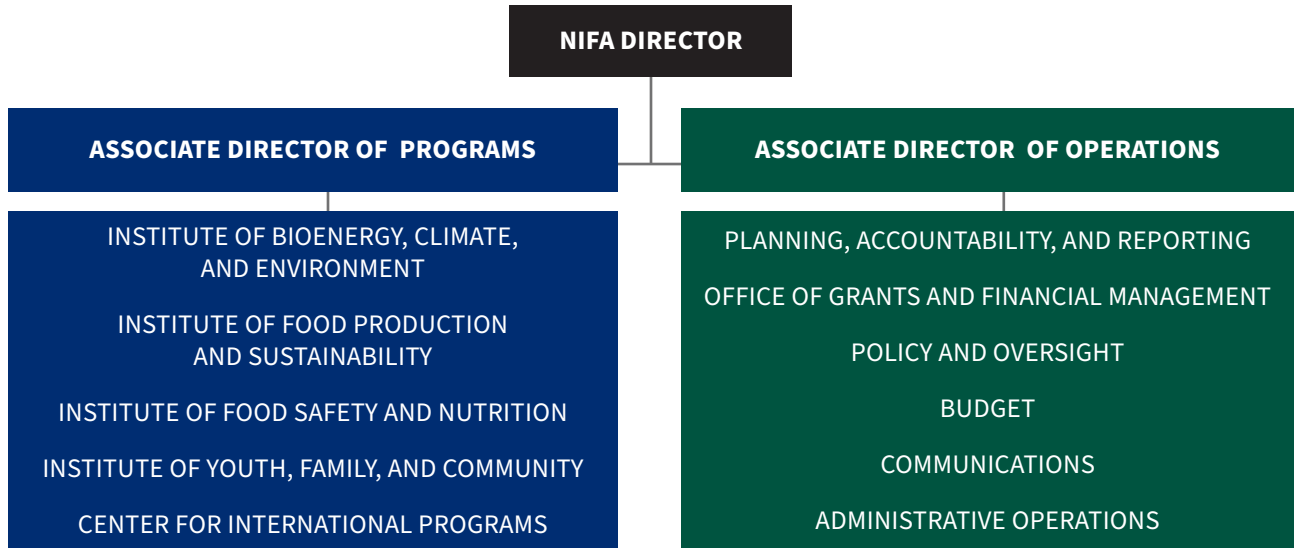
WHAT IS NOT CHANGING

- Our mission to invest in research, education, and Extension and outreach that keeps American agriculture productive, profitable, and at the forefront of innovation
- Our commitment to research excellence and scientific integrity
- Our charge to deliver Federal grants that advance agricultural research and education that serve the American people

WHAT THIS MEANS

- **FOR THE AGENCY:** Improved speed, consistency, and quality of grant programs
- **FOR STAKEHOLDERS:** Continued support with high-quality grant funding opportunities and consistent support from NIFA staff

PREVIOUS



NEW

